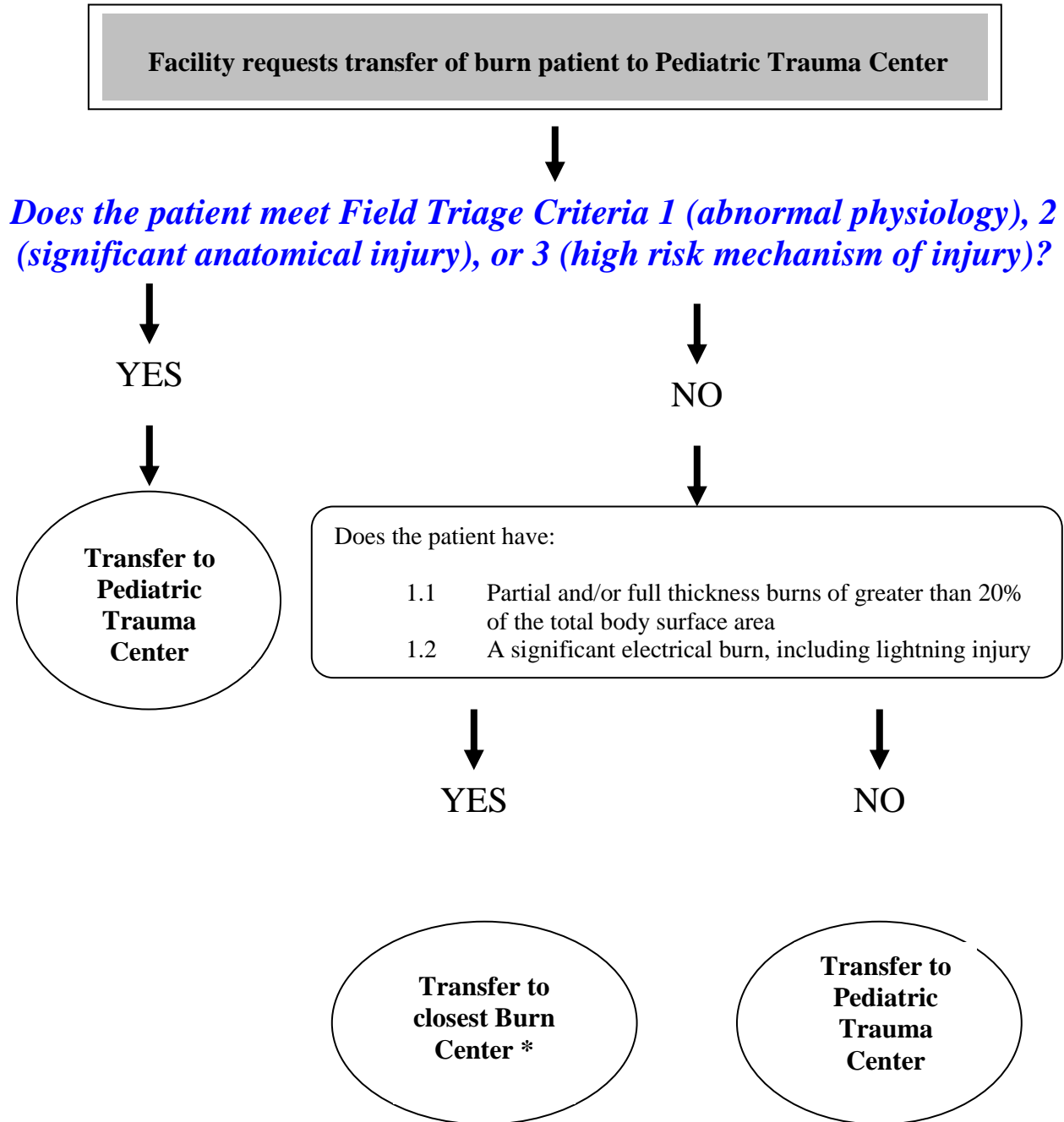


## CATRAC Burn Guidelines

### Interfacility Transfer of Burn Patients: PEDIATRIC <15 years

**PURPOSE:**

To standardize the transfer of burn patients from facilities within the CATRAC region, TSA “O”.



**Regional Burn Centers with Pediatric Capabilities**

University Hospital/*San Antonio* (210) 358-2500  
 Parkland Hospital/*Dallas* (214) 590-6690  
 Shriners’ Burn Center/*Galveston* (409) 770-6773  
 Brooke Army Med. Center/*SA* (210) 297-8601

\* Caveat—there may be circumstances in which the transferring physician might deem it beneficial to first transfer the patient to the regional pediatric trauma center for initial stabilization, airway management or vascular access prior to transfer to Burn Center